

Horton & Senate



111 Dewberry Road, Tidbury Green, Solihull, B90 1UH

£775,000

- NO CHAIN
- FAMILY BATHROOM, TWO ENSUITES, GUEST WC
- LOUNGE
- LANDSCAPED REAR GARDEN
- BEAUTIFULLY PRESENTED
- STUNNING OPEN PLAN KITCHEN/DINER
- OFF ROAD PARKING
- FOUR DOUBLE BEDROOMS
- FAMILY ROOM
- GARAGE

49a Station Road, Knowle, Solihull, West Midlands, B93 0HN
01564 773200

info@senateproperty.co.uk

111 Dewberry Road, Solihull B90 1UH

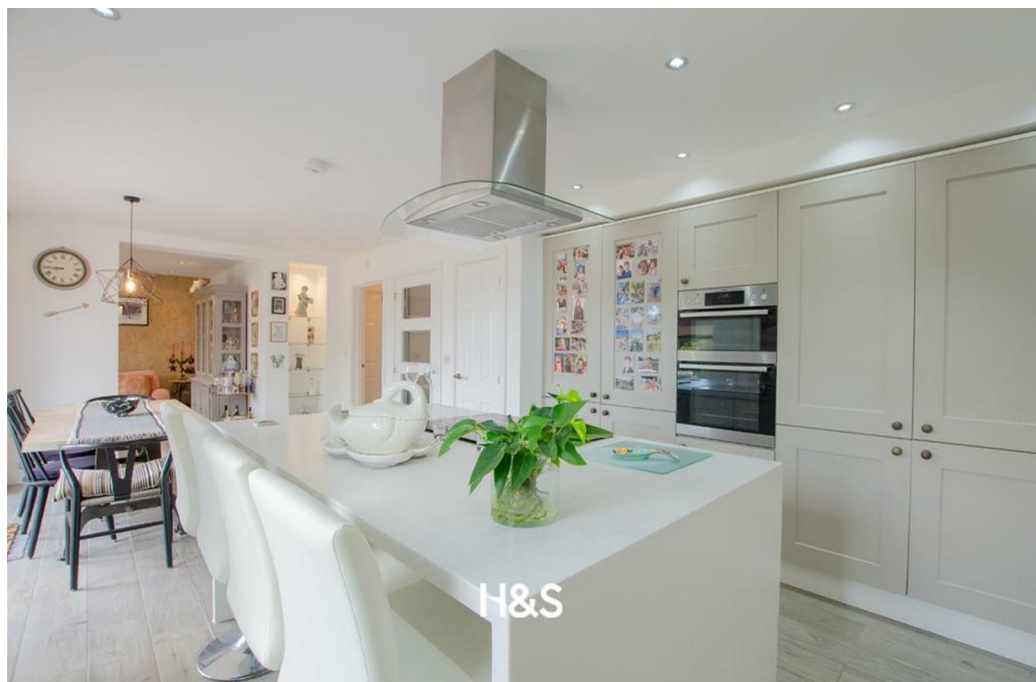
NO CHAIN. This immaculate four-bedroom detached house presents an exceptional opportunity for families seeking a spacious and modern home. The property boasts a contemporary open-plan kitchen, equipped with high-quality integrated appliances, perfect for culinary enthusiasts and entertaining guests alike. The property has had several developer upgrades including tiling, kitchen worksurfaces, landscaped garden and others.

4

3

2

Council Tax Band: F



This immaculate four-bedroom detached house presents an exceptional opportunity for families seeking a spacious and modern home. The property boasts a contemporary open-plan kitchen, equipped with high-quality integrated appliances, perfect for culinary enthusiasts and entertaining guests alike. The property has had several developer upgrades including tiling, kitchen worksurfaces, landscaped garden and others.

This residence is situated within the catchment areas of popular Solihull Schools making it an attractive choice for families prioritising education. The house features en suites in both the master bedroom and the second bedroom, adding a touch of luxury and convenience for residents.

Property - Approach

Via a driveway with space for off road parking for several vehicles. Access to the garage and side access to the rear garden.

Hallway

Doors to all ground floor rooms, a central heating radiator. Storage cupboard/cloakroom.

Downstairs WC

Double glazed window to the front elevation, tiled floor and part tiled walls. WC, wash basin, and a central heating radiator.

Lounge

4.7mx3.7m

Double glazed bay window to the front elevation, central heating radiator.

Kitchen/Diner

7.2mx3.8m

The hub of the home is this fantastic open plan area perfect for families and entertaining, there is a range of wall and floor based units with bespoke work surface over, inset sink with mixer tap and a kitchen island with storage. Integrated oven, hob, hood, microwave, fridge freezer and dishwasher. There is a set of patio doors leading onto the rear garden, a floor to ceiling double glazed

window and an opening to the family room.

Family room

3.50m x 3.19m

Central heating radiator, French doors leading to the rear garden.

First floor

Landing

Access to the loft, double glazed window to the front elevation, airing cupboard and central heating radiator.

Bedroom one

3.38m (max) x 3.75m (max)

A large master suite which comprises of a double bedroom with a double glazed bay window to the front elevation, central heating radiator and an opening to the dressing area and a door leading to the en suite.

En suite 1

Double glazed window to the side elevation. WC, wash basin, walk in shower.

Bedroom two

4.94m (max) x 3.77m (max)

Another large double bedroom with an ensuite. There is a double glazed window to the rear elevation, central heating radiator and access to the en suite.

En suite (to bedroom two)

Double glazed window to the side elevation. WC, wash basin, walk in shower.

Bedroom three

2.91mx4.6m

A double bedroom with a double glazed window to the front elevation, central heating radiator, and built in wardrobes.

Bedroom four

3.7mx2.9m

A double bedroom with a double glazed window to the rear elevation, central heating radiator.

Family bathroom

Suite comprises of a panelled bath, WC, wash basin, and separate walk in shower. A double glazed window to the rear elevation.

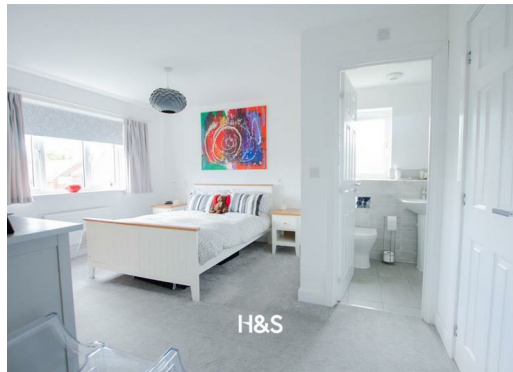
Outside

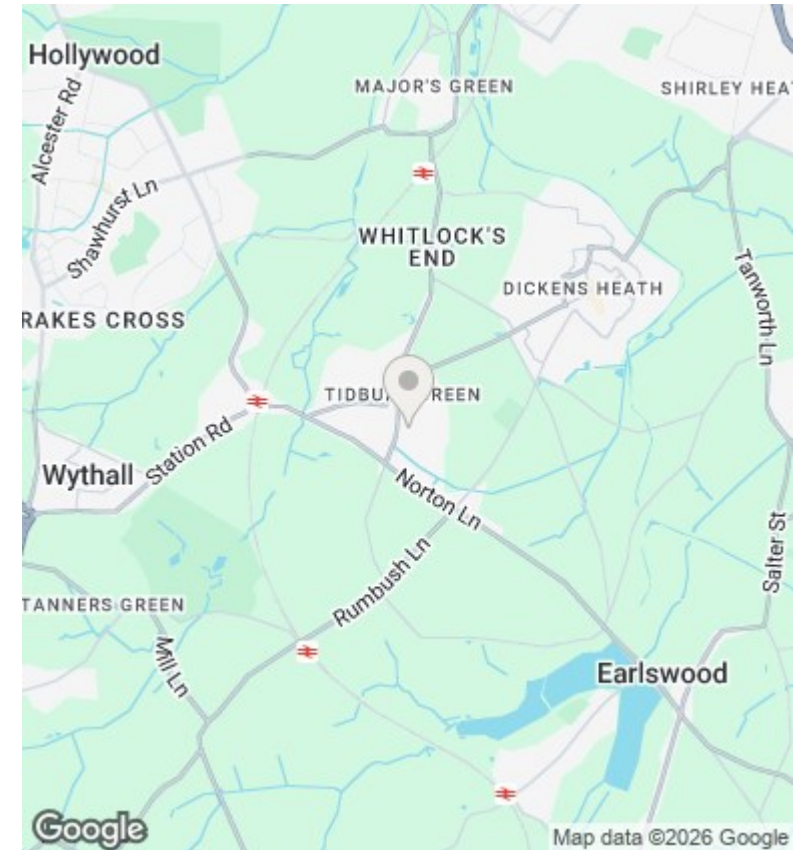
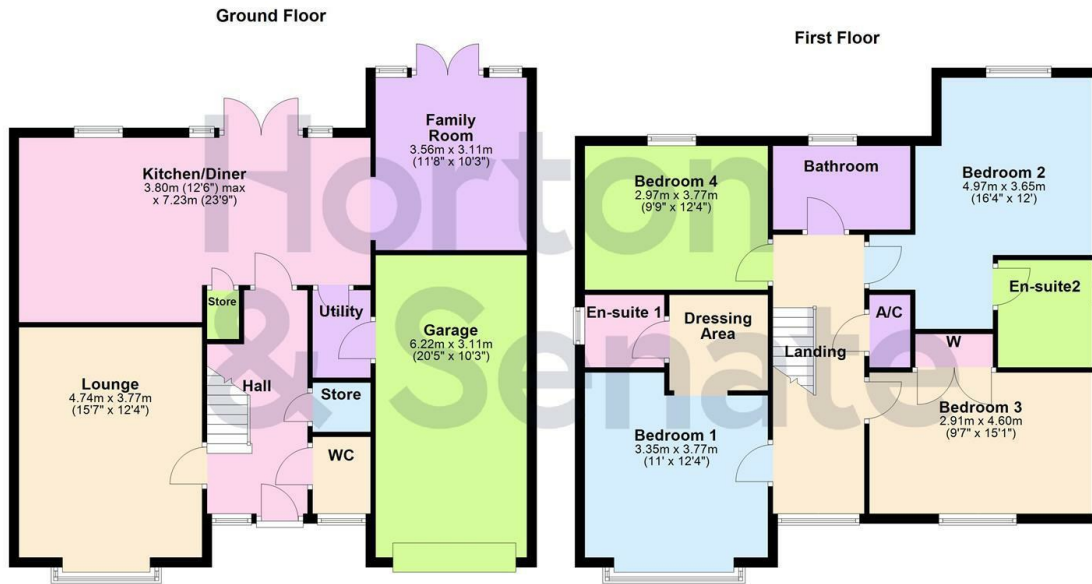
Rear garden

A stunning, landscaped rear garden which boasts a large patio area with a path leading down the middle of the lawn to a featured seating area. There is a lawn with bushes and shrubs to borders, space for garden sheds and a gate providing access to the front of the property.

Tidbury Green - Tidbury Green is a charming village in the Metropolitan Borough of Solihull, West Midlands, known for its rural character and strong community spirit. Surrounded by mature oak trees and open green spaces, it offers a peaceful atmosphere while remaining well-connected via the M42. The village features a mix of detached homes, with Tidbury Green School at its heart. Residents enjoy local parks, family-friendly events, and proximity to attractions like the Transport Museum Wythall. Despite increased traffic, Tidbury Green maintains its tranquil appeal, making it an attractive location for those seeking a balance between countryside living and urban accessibility.







Directions

Viewings

Viewings by arrangement only. Call 01564 773200 to make an appointment.

Council Tax Band

Energy Efficiency Rating		
	Current	Potential
<i>Very energy efficient - lower running costs</i>		
(92 plus) A		
(81-91) B		
(69-80) C		
(55-68) D		
(39-54) E		
(21-38) F		
(1-20) G		
<i>Not energy efficient - higher running costs</i>		
England & Wales	EU Directive 2002/91/EC	